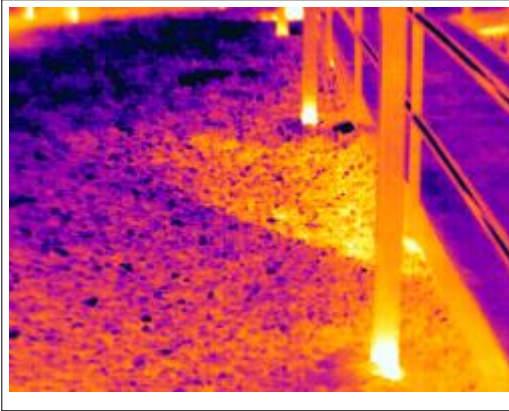
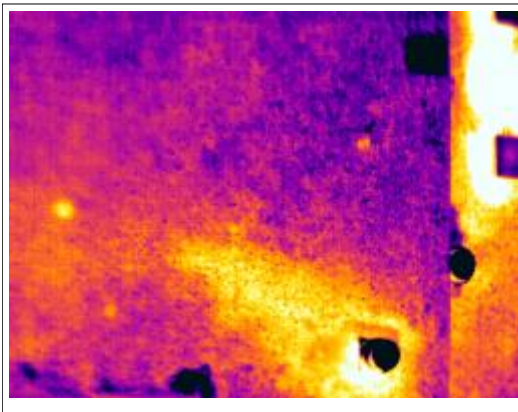


Thermogram 1.



Distinct board pattern of wet Polyisocyanurate. Outside temperature was +/- 34°F.

Thermogram 2.



View from above of wet area in expanded polystyrene insulation. Outside temperature +/- 73°F.

Additional Notes

- Additional cooling time after sunset may be required.
- Ballast stone should be uniform as possible.
- Patterns will be based on insulation type.
- Patterns may be more distinguishable from an elevated viewpoint.
- Large inside/outside temperature difference is not always necessary.